

Attachment 1



UNITED STATES ENVIRONMENTAL PROTECTION AGENCY
GREAT LAKES NATIONAL PROGRAM OFFICE
SOUTHEASTERN MICHIGAN OFFICE
9311 GROH ROAD
GROSSE ILE, MI 48138-1697

April 27, 2018

Chuck Gadelmann. P.E.
Corporate Remediation Manager
Honeywell International
1985 Douglas Drive
MN10-132B
Golden valley, MN

Re: Lower Rouge River Old Channel Sediment Remediation Project

Dear Mr. Gadelmann:

As you know, in 2017 US EPA and Honeywell International, Inc. (Honeywell) entered into a public/private cost-share Project Agreement (PA) under the Great Lakes Legacy (GLLA) for remediation of contaminated sediments in the Lower Rouge River – Old Channel (LRROC). By signing the agreement US EPA approved of in-kind cost contributions by Honeywell, most significantly the financing and construction of a permanent steel bulkhead wall. I would like to note that as the LRROC project is a public/private cost-shared agreement any increase in Honeywell's costs as a result of increased costs in steel will also impact the government's cost share and will require an increase in the project budget ceiling in the Project Agreement.

You should also know that we acknowledge Honeywell's efforts to conserve costs while complying with project specifications in procuring materiel for the steel bulkhead. We appreciate the close coordination with Honeywell throughout the procurement process to ensure compliance with the Project Agreement, federal requirements, and project specifications.

Should you have any questions or comments please contact me at Ellison.Rosanne@epa.gov or 734-692-7689.

Sincerely,

A handwritten signature in black ink that reads "Rosanne Ellison".

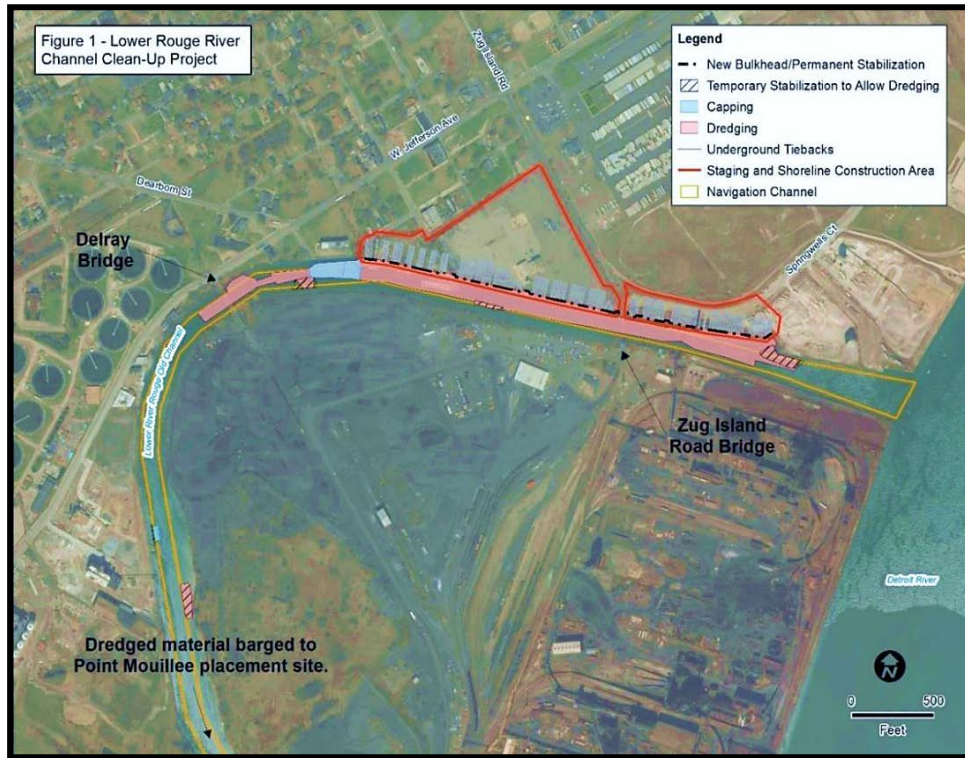
Rosanne Ellison
Project Manager

Attachment 2

GREAT LAKES LEGACY ACT

SEDIMENT CLEANUP IN THE LOWER ROUGE RIVER – OLD CHANNEL

MARCH 2018



The U.S. Environmental Protection Agency (EPA) is working throughout the Great Lakes to clean up pollution in river and lake sediment. As part of an agreement with Honeywell, Inc., EPA and Honeywell plan to clean up sediment in the Lower Rouge River – Old Channel. The purpose of the cleanup is to improve conditions of the Old Channel for people, fish, and wildlife.

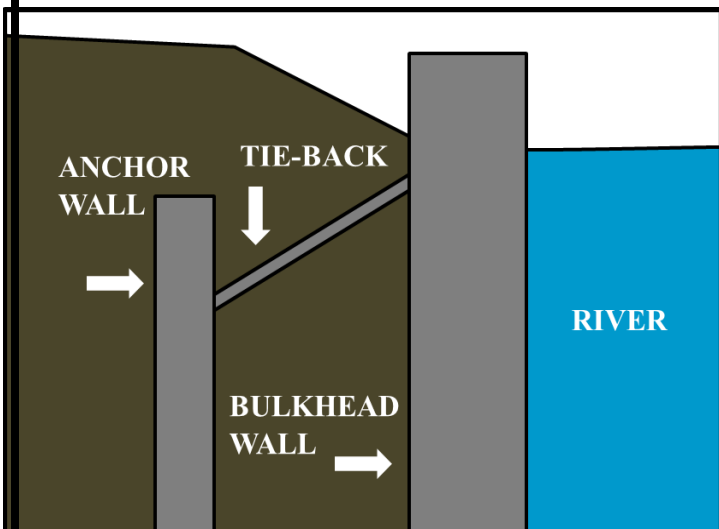
Project Overview

The cleanup for the Lower Rouge River – Old Channel includes installing a permanent bulkhead wall, dredging,

capping, and temporary shoreline stabilization (Figure 1 above).

- Permanent Bulkhead Wall:** The river banks in the Old Channel are steep. To safely remove the sediment a permanent bulkhead wall will be installed. Example of permanent bulkhead and anchor to support the river banks.

To keep the permanent wall in place it will be secured to a smaller anchor wall buried behind it and connected by steel rods called "tie-backs."



Schedule

Permanent bulkhead wall construction is expected to begin in the spring of 2018 and take about 13 months. Dredging and capping is expected to begin in early 2019 and will take about 9 months.

Short-Term and Permanent Local Impacts

During the project, there may be more traffic than usual in the area for workers, delivery of material, and disposal of debris.

Installation of the anchor wall for the permanent bulkhead wall requires construction at the end of Springwells Court. During construction the last 800 feet of the road will be closed. The rest of Springwells Court will not be affected.

Construction of the anchor wall also requires temporary closure of the last 50 feet of Medina Street and the eastern half of Medina Street for another 50 feet. The construction will involve removing pavement, installing tie-backs, and restoring the road. A barricade and signs will be posted at the intersection of Medina Street and Cary Street allowing through traffic only for residents and businesses.

Contact Us

For more information, please contact the EPA: Rose Ellison at (734) 692-7689/ ellison.rosanne@epa.gov, or Susan Virgilio at 312-886-4244/ Virgilio.Susan@epa.gov.

Project Partners

- **Dredging:** This is the removal of polluted sediment from the Old Channel. Barges will take the sediment offsite for disposal.
- **Capping:** This is the placement of clay and rock on the bottom of the river to cover sediment that cannot be removed.
- **Temporary Shoreline Stabilization:** Some areas along the shoreline will need support only during dredging. Temporary supports (sheetpile) will be driven into the river bank before dredging. When dredging is complete, the area will be filled with clean material to support the river bank and the temporary sheetpile will be removed and reused.

Other Actions

A large amount of debris in the river will be removed. Large debris, such as timber piles, scrap wood and metal, and about eight cars, will be cleaned and shipped off for recycling or disposal.

Honeywell

Attachment 3

Caryl, Joseph W

From: Franklin, Peggy E
Sent: Tuesday, July 25, 2017 9:51 AM
To: Caryl, Joseph W; Gal, Justin; Stieber, Elizabeth A; Stirban, Laura; Kiehler, Matt; Tracy, Lyle N
Cc: Ghaisas, Raj (MPO, NJ); Kumar, Vinod
Subject: FW: HW Detroit - LRROC Steel Sheeting Material : Possible Alternate
Attachments: Skyline Steel LLC - LRROC Steel Sheeting Material - Table 1-1 REVISED.xlsx

Importance: High

See attached from Skyline Steel

Peggy Franklin

Sr. Subcontract Administrator
Amec Foster Wheeler Environment & Infrastructure, Inc.
3800 Ezell Rd., Ste 100, Nashville, TN 37211
Direct: 615-577-7114
Main: 615-333-0630
Fax: 866-741-4440
peggy.franklin@amecfw.com www.amecfw.com

Redacted
information is
business
confidential and
includes supplier
specific pricing.

From: Jake McClendon - SKYLINE STEEL [mailto:s4system-prod@ansmtp.ariba.com]
Sent: Tuesday, July 25, 2017 8:33 AM
To: Franklin, Peggy E <Peggy.Franklin@amecfw.com>
Subject: RE: HW Detroit - LRROC Steel Sheeting Material : Possible Alternate

All

Please see the attached revised bid tabulations for the new lump sum price of [REDACTED]. Skyline Steel is still working to evaluate the change in wale and thread bar due to the offer of wider sheets. Please see the qualifying notes below for the offer. Any questions let me know. Thank you!

[REDACTED]/Lump Sum

-AZ50-700 RD Gr. 67.2 offered in place of AZ50 Gr. 65.

-Offer is valid for written commitment of intent to purchase by 7/28/2017.

-Delivery figured by direct rail access to site. No transloading, trucking or storage is included in price.

-Delivery is to start immediately upon fabrication completion, estimated first deliveries to occur early December 2017.

Kyle Hawley

Skyline Steel LLC

513-509-9058

Id: MSG43640550.1

Sent: 07/13/2017 10:39 PM

Subject: RE: HW Detroit - LRROC Steel Sheeting Material : Possible Alternate

All

Please see the revised offer below from Skyline Steel LLC for the Honeywell LRROC project. This new price is offered using the Rolled Down AZ50700 Gr. 67.2 section only (cut sheet is attached for reference) to replace the AZ50 Gr. 65. Please see qualifying notes below for the offer. Any questions let me know. Thank you and have a great day.

/Lump Sum

-AZ50-700 RD Gr. 67.2 offered in place of AZ50 Gr. 65.

-Offer is valid for written commitment of intent to purchase by 7/28/2017.

-Delivery figured by direct rail access to site. No transloading, trucking or storage is included in price.

-Delivery is to start immediately upon fabrication completion, estimated first deliveries to occur early December 2017.

Kyle Hawley
Skyline Steel LLC
513-509-9058

Id: MSG43640550

Sent: 07/11/2017 08:17 PM

Subject: HW Detroit - LRROC Steel Sheeting Material : Possible Alternate

All

Please see section below Skyline Steel is submitting as an alternate for the Honeywell LRROC project. We are currently confirming with the mill for the guarantee of 67.2 KSI. I have included our calculations below as well as the material cut sheet. If you could please let us know if this section will be acceptable I would greatly appreciate it. I have begun working on pricing for this material. Thanks and have a great day!

AZ50-700 (-0.5)

$S_x = 90.3 \text{ in}^3/\text{ft}$

$I_x = 895.4 \text{ in}^4/\text{ft} > 886.5 \text{ in}^4/\text{ft}$

Bending Strength = $90.3 \text{ in}^3/\text{ft} * 66.7 \text{ ksi} = 6,023.0 \text{ kin/ft} < 6,064.5 \text{ kin/ft} (0.7\% \text{ low})$

Since the bending strength is low we would need a slightly higher yield strength.

Required Yield Strength = $(6,064.5 \text{ kin/ft}) / (90.3 \text{ in}^3/\text{ft}) = 67.2 \text{ ksi}$

Kyle Hawley
Skyline Steel LLC
513-509-9058

This message has one or more attachments. To retrieve attachments, click [Click Here](#)

This message was also sent to: Raj Ghaisas, Katalin Kovacs, Sanith, Magnus Dimming, Jeet, Justin A Rodrigues, Rachel Sexsmith, Vinod Kumar, Raghavendra N, Gail L Parker II, Emil Rus

Honeywell sourcing site, Event Doc1035331222: HW Detroit - LRROC Steel Sheeting Material_RFP, Realm: honeywell, Message Id: MSG43640550.2, [Click Here](#)

**TABLE 1-1
LINE ITEM PROPOSAL BREAKDOWN
LRROC Sheeting Material
DETROIT, MICHIGAN**

Bid Item	Bid Item Description	Estimated Quantity	UOM	Unit Price	Total	Manufactured Location	Date Material Can Start Arriving Onsite
1	Sheetpile Wall Steel Sheeting						
1.1	ASTM A 572 Gr. 50 Sheeting (l=599 in /ft and S=59.5 in ³ /ft min)	11,174	CWT			Luxembourg	
1.2	ASTM A 572 Gr. 65 Sheeting (l=886.5 in /ft and S=93.3 in ³ /ft min)	78,092	CWT			Luxembourg	
1.3	ASTM A 572 Gr. 65 Sheeting with Welded Stiffener Plate (l=1,072 in /ft and S=107 in ³ /ft min)	1,591	CWT			Luxembourg	
					Subtotal Item 1		
2	Deadmen Steel Sheeting						
2.1	ASTM A 572 Gr. 50 Sheeting (l=300.0 in /ft and S=36.2 in ³ /ft min)	8,462	CWT			Luxembourg	
2.2	ASTM A 572 Gr. 50 Sheeting (l=732.9 in /ft and S=74.3 in ³ /ft min)	1,040	CWT			Luxembourg	
2.3	ASTM A 572 Gr. 50 Sheeting (l=599 in /ft and S=59.5 in ³ /ft min)	2,977	CWT			Luxembourg	
2.4	ASTM A 572 Gr. 50 Sheeting (l=694.5 in /ft and S=70.6 in ³ /ft min)	3,751	CWT			Luxembourg	
					Subtotal Item 2		
3	Walers						
3.1	Waler W14x48	2,875	CWT			Blytheville AR	
3.2	Waler W24x117	936	CWT			Blytheville AR	
3.3	Waler W24x146	2,351	CWT			Blytheville AR	
					Subtotal Item 3		
4	Tieback Bars						
4.1	1-3/4 Inch Diameter Tieback Bars	1,984	LF			Camp Hill PA	
4.2	2-1/4 Inch Diameter Tieback Bars	16,096	LF			Camp Hill PA	
4.3	2-1/2 Inch Diameter Tieback Bars	2,875	LF			Camp Hill PA	
					Subtotal Item 4		
5	Fabrication Welding						
5.1	Pre-Welding of Sheetpile Wall Sheets (Welded Pairs)	36,515	LF			Export PA / Steelton PA	
5.2	Pre-Welding Angles and Bottom Plates	12,578	LF			Export PA / Steelton PA	
5.3	Pre-Welding of Sheet Stiffener Plates (Includes Stiffener Plate in \$/LF)	2,520	LF			Export PA / Steelton PA	
					Subtotal Item 5		
6	Tieback Bearing Plates and Miscellaneous Materials						
6.1	Tieback Bearing Plates	282	CWT			Export PA / Steelton PA	
6.2	Miscellaneous Plates	690	CWT			Export PA / Steelton PA	
6.3	Angles and Bottom Plates	897	CWT			Export PA / Steelton PA	
6.4	Angled Tieback Connections to Sheetpile	60	CWT			Export PA / Steelton PA	
					Subtotal Item 6		
7	Miscellaneous Bolts and Hardware						
7.1	Waler to Sheet Bolts	2,982	LF			Export PA / Steelton PA	
7.2	Waler to Sheet Nuts and Washers	2,702	Each			Export PA / Steelton PA	
7.3	Waler Splice Bolts	1,348	Each			Export PA / Steelton PA	
7.4	Waler Splice Nuts and Washers	2,696	Each			Export PA / Steelton PA	
					Subtotal Item 7		
8	Pipe Piles						
8.1	Pipe Piles	440,138	CWT			Iuka MS	
8.2	Pile Cap Plates	11,678	CWT			Export PA	
8.3	Pile Driving Tip	26	Each			Huron MI	
					Subtotal Item 8		
9	Pre-Fabrication Submittals						
9.1	Pre-Fabrication Submittals and Shop Drawings	1	LS				
					Subtotal Item 9		
					Total Cost (Items 1-9)		

UOM = Unit of Measure
CWT = Centum weight (100 Pounds)
LF = Linear Foot
LB = Pound
SF = Square Foot

Attachment 4

Honeywell Procurement Summary GLNPO/LRROC Steel Sheeting Request for Proposal

The below summary describes the procurement process implemented for purchase and delivery of the permanent sheet pile wall steel sheets and miscellaneous steel materials for the wall under the Remedial Action (RA) component of the Honeywell/EPA GLLA Lower Rouge River Old Channel (LRROC) project. Steel procurement was based on drawings and specifications dated 05/26/17 and 06/01/17, respectively. On 4/7/2017, the steel price was estimated by Honeywell/AmecFW's internal engineering estimate team at \$10.5M.

Prequalification/Development of Bidders List

Eight steel suppliers with similar project experience were solicited to determine their capability of producing the materials to meet the design requirements (moment of inertia, section modulus, and length) as well as provide the material based on the anticipated project schedule. Based on the discussions, Honeywell/AmecFW determined that the following four suppliers were qualified to provide the steel materials for the project.

- LB Foster Piling
- Piling Products
- Skyline Steel
- JD Fields

Steel Sheeting Material RFP

AmecFW's permanent sheet pile wall design was based on sheet sections fabricated by Skyline Steel (AZ 32-750, AZ 50, AZ 20-700, AZ 20-700N, and AZ 38-700N). However, steel sheeting suppliers other than Skyline Steel could competitively bid on the sheet sections because the Steel Sheeting Material Request for Proposal (RFP) did not require Skyline Steel's AZ sheets. Instead, the RFP requested steel sheeting that could be delivered within a specified schedule and meet the intent of the design: the minimum moment of inertia, section modulus, and length. These three design criteria and delivery schedule were Honeywell/AmecFW's predetermined award criteria for evaluating the lowest price and technically acceptable (LPTA) proposals.

Bidding

Honeywell utilizes an internet based bidding platform (ARIBA) to initiate, communicate, document and manage the bidding process. Prior to using ARIBA, suppliers were trained to use the software to submit questions, receive answers, and submit proposals. The following is a summary of the key dates and bidder communications.

- 06/02/17 – Honeywell/AmecFW posted RFP to ARIBA (Table 1 - Bid Schedule is attached)
- 06/08/17 – Questions from Bidders Due
- 06/13/17 – Piling Products declined to bid because they could not meet required section modulus

*Honeywell Procurement Summary
GLNPO/LRROC Steel Sheeting Request for Proposal*

- 06/15/17 – Honeywell/AmecFW Issued Addendum 1 that responded to the Bidders' questions, modified the sheet stiffener plates at select locations due to recently revised dredge cuts, and extended the bid due date by 2 days.
- 06/21/17 – Received Proposals
 - Received two proposals. Bidders included Skyline and JD Fields.
 - LB Foster was unresponsive and ultimately declined to bid
- 06/21/17 to 06/22/17 – Honeywell/AmecFW evaluated bids and compared proposed sheets to technically acceptable award criteria. Bid evaluations included the following:
 - Checked quantities, delivery methods, fabrication process, construction quality assurance methods, and schedule
 - Compared proposed sheets to minimum moment of inertia, section modulus, and length
 - Reviewed contractor prices and compared to AmecFW engineering estimate. The lowest pre-eAuction proposed price was 2% lower than the estimate. The highest pre-eAuction proposed price was 33% higher than the estimate.
 - Summarized source of steel material (offshore vs. US/domestic)
- 06/23/17 – Honeywell/AmecFW requested clarifications from JD Fields
- 06/26/17 – JD Fields provided response to Honeywell/AmecFW questions.
- 06/28/17 – Conducted eAuction (via ARIBA) that included the following:
 - Prior to eAuction bidding, bidders were provided eAuction training and trial simulations if requested. This training included a software compatibility check and instructions on how to submit updated bids, observe their rankings, ask questions, and request clarifications during the eAuction.
 - During the eAuction each bidder could reduce their price and observe their price ranking.
 - Following the eAuction, suppliers submitted revised prices.
- 7/25/2017 – Skyline proposed an alternate that meets the design criteria.

Procurement Summary

- JD Fields was ranked No.1 after the eAuction because their proposal was LPTA and 2% less than AmecFWs estimated price.
- Skyline Steel's proposed alternate on 7/25/2017 was submitted after the eAuction and after the end of the bidding process, but was 3.5% less than JD Fields proposed price.
- As a result of the procurement process, the steel material is expected to be procured at approximately 8% below market price.
- No award or NTP has been provided to any potential supplier to date.

Enclosure:

Table 1 - Bid Schedule

TABLE 1
BID SCHEDULE & MATERIAL MANUFACTURED LOCATION
LRROC Sheeting Material
DETROIT, MICHIGAN

LRROC Steel Bid Item	Origin of Steel – Bidder #1	Origin of Steel – Bidder #2
Sheetpile Permanent Barrier Wall Steel Sheeting	China	Luxembourg
Deadman Steel Sheeting	China	Luxembourg
Walers	USA	USA
Tieback Bars	USA	USA
Fabrication Welding (by manufacturer, welded pairs, etc.)	USA	USA
Tieback Bearing Plates and Misc. Materials	USA	USA
Miscellaneous Bolts and Hardware	USA	USA
Pipe Piles	USA	USA

Attachment 5

J.D. Fields & Company, Inc.
PO Box 218424
HOUSTON, TEXAS TX 77007
USA

Contact: Thomas Karras
Phone: +49 (211) 4300-350
Fax: +49 (211) 4300-555
Thomas.Karras@szmh-group.com

Packing list

Your Reference: 73-64414
Our Trading-Contract: 315/20149/79689
Dispatch: by ship
Country of Origin: China
Country of Destination: USA

Page: 1 / 1
Date: 03/01/2018
Customer: 112443

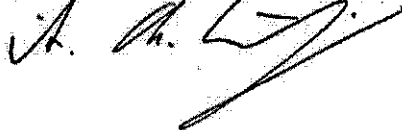
Shipment with MV "ADAM ASNYK" from Bayuquan, China to Camden, USA on 02/26/2018.

HOT ROLLED STEEL SHEET PILE, GR.65 ACC. TO ASTM A572.

Attached "SIZE-BREAKDOWN" is an integral part of this order, stating all relevant details for below mentioned sizes.

Item	kgs
0020 single and double sheet piles ZZ50-700	3,988,373
0030 single and double sheet piles ZZ40-700	60,421
0040 single and double sheet piles ZZ38-700	174,086
0050 single and double sheet piles ZZ36-700	742,440
Total:	4,965,320

Salzgitter Mannesmann International GmbH



/99230478//03.2018/FI4001275/STRU/27032018/155024

Size-Breakdown
 SMID-Order: 315/20149/79689
 Sheet Piles for J.D. Fields



SIZE TYPE	LENGTH (FT)	LENGTH (M)	QUANTITY (KG)	PIECES	
				paired piles	single piles
paired ZZ50-700	90'	27,432	301.812	33	
paired ZZ50-700	89'	27,127	1,600.813	177	
paired ZZ50-700	88'	26,822	876.361	98	
paired ZZ50-700	87'	26,518	167.981	19	
paired ZZ50-700	85'	25,908	829.222	96	
paired ZZ50-700	80'	24,384	146.333	18	
single ZZ50-700	89'	27,127	18.088		4
single ZZ50-700	88'	26,822	13.414		3
single ZZ50-700	87'	26,518	13.262		3
single ZZ50-700	85'	25,908	12.957		3
single ZZ50-700	80'	24,384	8.130		2
paired ZZ40-700	36'	10,973	47.158	16	
single ZZ40-700	72'	21,946	11.789	2	
single ZZ40-700	36'	10,973	1.474		1
paired ZZ38-700	35'	10,668	172.736	64	
single ZZ38-700	35'	10,668	1.350		1
paired ZZ36-700	85'	25,908	319.829	52	
paired ZZ36-700	83'	25,298	258.247	43	
paired ZZ36-700	35'	10,668	157.020	62	
single ZZ36-700	85'	25,908	3.075		1
single ZZ36-700	83'	25,298	3.003		1
single ZZ36-700	35'	10,668	1.266		1
GRAND TOTAL			4,965,320	700	